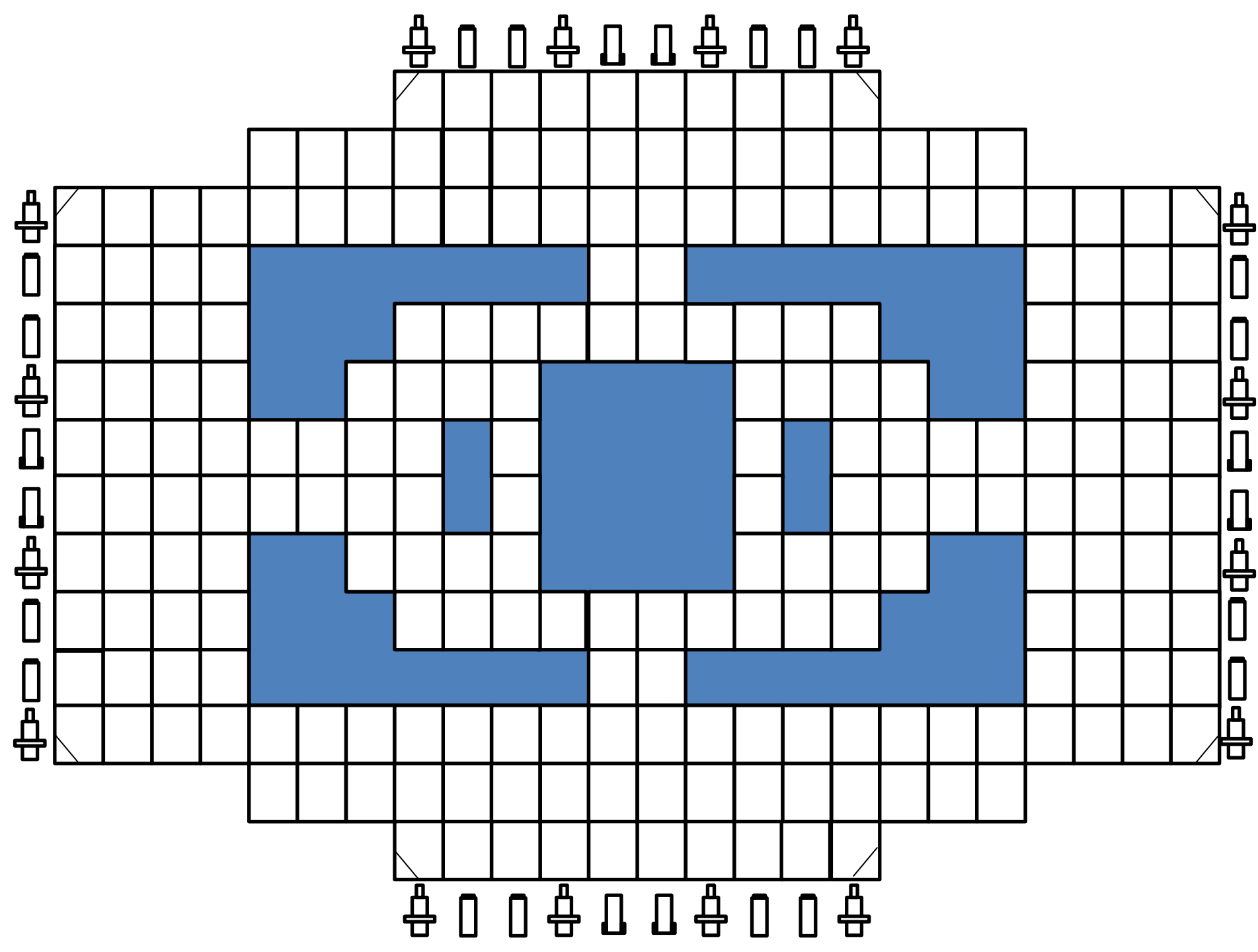


# Shock Ben Row

The board is one the next slide

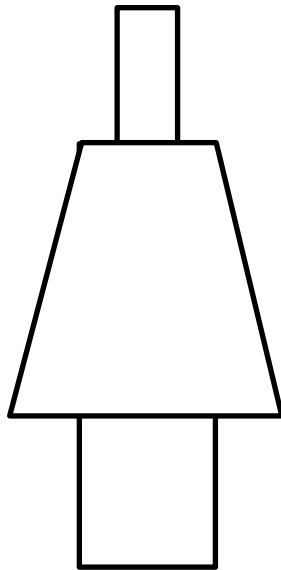


# Rules

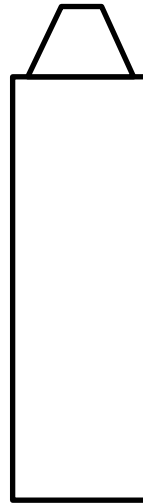
- You can jump the opponent's pieces and take them or go where they are and take their piece.
- You can jump your own piece but you don't lose it and you can jump as many of your own pieces as you want as long as if the piece is front, behind, beside or on an angle that is one space away.
- You have 10 guys per team. 4 players is the most you can have per board.
- There are three types of guys Bentin is one of the types it can go forwards, backwards, left and right the Rowtin can go on angles the Shockit can do all of the moves.
- You have 4 Bentins 4 Rowtins 2 Shokits.

# Pieces

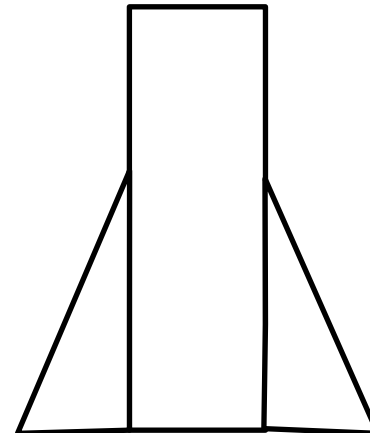
Bentin



Rowtin



Shockit



[Go to board](#)

Which way  
they can go.

